



Clinicopathological Significance of Estrogen Receptor β and Estrogen Synthesizing/Metabolizing Enzymes in Urothelial Carcinoma of Urinary Bladder

Naomi Sato¹, Kazue Ise^{2,3}, Shuko Hata^{2,3}, Shinichi Yamashita⁴, Akihiro Ito⁴, Hironobu Sasano³ and Yasuhiro Nakamura^{2,3*}

¹Division of Pathology, Sendai City Hospital, Sendai, Japan, ²Division of Pathology, Faculty of Medicine, Tohoku Medical and Pharmaceutical University, Sendai, Japan, ³Department of Pathology, Tohoku University Graduate School of Medicine, Sendai, Japan, ⁴Department of Urology, Tohoku University Graduate School of Medicine, Sendai, Japan

Sex-specific differences in the incidence of urinary bladder carcinomas are well known, and the possible involvement of sex steroids has been proposed. We previously reported the association of the loss of androgen receptors and androgen-producing enzymes with tumor progression of urinary bladder cancer patients. Clinically, the selective estrogen receptor modulators (SERMs) were reported to suppress the progression of these tumors but the status of estrogen receptors (ERs) has not been well studied in patients with bladder urinary cancer. Moreover, not only ERs but also estrogen-related enzymes, such as aromatase, steroid sulfatase (STS), and estrogen sulfotransferase (EST), have been reported in the biological/clinical behavior of various hormone-dependent carcinomas but not studied in urinary bladder carcinoma. Therefore, in this study, we immunolocalized ERs as well as estrogen metabolizing enzymes in urinary bladder carcinoma and performed immunoblotting and cell proliferation assays using the bladder urothelial carcinoma cell line, T24. The results revealed that the loss of STS and aromatase was significantly correlated with advanced stages of the carcinoma. *In vitro* studies also revealed that T24 cell proliferation rates were significantly ameliorated after treatment with estradiol or diarylpropionitrile (DPN). EST and aromatase were also significantly correlated with the nuclear grade of the carcinoma. The results of our present study, for the first time, demonstrated that biologically active estrogens that bind to ERs could suppress tumor progression and the inactive ones could promote its progression and the potential clinical utility of SERM treatment in selective patients with urinary bladder carcinoma.

Keywords: ER β , urothelial bladder carcinoma, steroid metabolism, steroid sulfatase, aromatase, estrogen sulfotransferase 5

OPEN ACCESS

Edited by:

László Kopper,
Semmelweis University, Hungary

*Correspondence:

Yasuhiro Nakamura
yasu-naka@tohoku-mpu.ac.jp

Received: 31 July 2020

Accepted: 10 February 2021

Published: 15 April 2021

Citation:

Sato N, Ise K, Hata S, Yamashita S,
Ito A, Sasano H and Nakamura Y
(2021) Clinicopathological Significance
of Estrogen Receptor β and Estrogen
Synthesizing/Metabolizing Enzymes in
Urothelial Carcinoma of
Urinary Bladder.
Pathol. Oncol. Res. 27:589649.
doi: 10.3389/pore.2021.589649

INTRODUCTION

Urinary bladder urothelial carcinoma is the seventh most common cancer worldwide, and its occurrence has recently increased. This carcinoma is also known to be three times more common in males than in females [1], but the reasons for this difference are unknown [2]. One proposed hypothesis is that androgens could play an essential role in regulating the onset of urinary bladder urothelial carcinoma [3, 4]. The results of previously reported epidemiologic studies indicated that postmenopausal women harbored an increased risk of developing bladder urothelial carcinoma in comparison to premenopausal women [5], suggesting the potential roles of androgens, as androgens become the more dominant steroids following menopause.

In addition to androgens, estrogens are also well known to be involved in the development of several hormone-dependent carcinomas such as breast, endometrioid, and ovarian carcinomas [6]. Recently, not only estrogens themselves but also estrogen related enzymes have been proposed as a target of hormonal therapy, such as aromatase and aromatase inhibitor, which are used as a gold standard treatment for estrogen-dependent post-menopausal breast cancer patients [7]. Estrogens are also produced from circulating inactive steroids through steroid sulfatase (STS) and/or aromatase, while estrone or E1 is inactivated into estrone sulfate by estrogen sulfotransferase (EST) [6]. **Figure 1** summarizes the correlation between steroid hormones and steroid metabolism enzymes. STS has been reported to be expressed in several tissues including the placenta and skin fibroblasts, breasts, and fallopian tubes [8] and has been detected in approximately 90% of breast carcinomas [9], 86% of endometrial carcinomas [10], several histological types of ovarian carcinomas [11], 85% of prostate carcinomas [12], and 61% of colon adenocarcinomas [13]. In addition, STS status has been reported to be correlated with poor survival rate in breast [14], endometrial [10], and ovarian cancer patients [15].

EST expression has also been reported in a wide range of adult and fetal tissues, including healthy urothelial cells and EST, which are considered to protect these tissues from excessive estrogenic effects [16]. EST expression has been reported to be lower than STS expression in several malignant tissues, such as 40% of invasive breast carcinomas [17], 29% of endometrial carcinomas [10], 77% of prostate carcinomas [12], and 44% of colon carcinomas [13]. In contrast to STS, EST immunoreactivity has been reported to be inversely correlated with tumor size, lymph node status, risk of recurrence, and prognosis in the invasive breast carcinoma [17].

Estrogen receptors (ERs) are expressed in bladder urinary carcinoma cells [18]. In particular, the status of ER β has been reported to be more abundant than that of ER α in urinary bladder carcinomas [19, 20]. The possible involvement of ER β in bladder urothelial carcinoma development has been proposed, but its details are not known.

Therefore, in this study, for the first time, we examined the status of STS, EST, and aromatase in the bladder urothelial

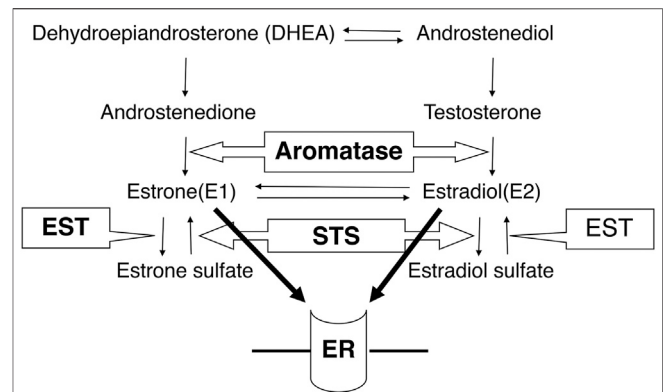


FIGURE 1 | The correlation between steroid hormones and steroid metabolism enzymes. Aromatase converts androstenedione to estrone and testosterone to estradiol. STS inactivates estrone sulfate and estradiol sulfate, while estrone and estradiol are inactivated by EST. STS: steroid sulfatase, EST: estrogen sulfotransferase, ER: estrogen receptor.

carcinoma tissue to understand the actions of estrogens further. We also conducted *in vitro* studies to substantiate the results obtained from immunohistochemical studies in clinical specimens of urinary bladder carcinoma.

MATERIALS AND METHODS

Patients and Tissue Preparation

A total of 113 cases of primary urinary bladder urothelial carcinoma were retrieved from the surgical pathology files at Tohoku University Hospital (Sendai, Japan). These patients did not receive chemotherapy or hormonal therapy prior to surgery.

All enrolled patients signed the informed consents. The research protocols for this particular study were approved by the Ethics Committee at Tohoku University School of Medicine (2013-1-37).

Immunohistochemistry

Immunohistochemistry was performed using the Histofine kit (Nichirei Biosciences, Tokyo, Japan). The antibodies used for immunohistochemistry of Ki-67, ER β , STS, EST, and aromatase and the details of immunostaining are summarized in **Table 1**. The antigen-antibody complex was visualized using the 3,3'-diaminobenzidine solution and counterstained using hematoxylin. Ki-67 immunoreactivity was assessed by using the labeling index (LI in %) [21]. ER β immunoreactivity was scored semiquantitatively, incorporating both the intensity and percentage of positive staining (H-score) [22]. STS, EST, and aromatase were examined in the cytoplasm of bladder urothelial carcinoma cells, and the cases harboring more than 10% positive carcinoma cells were tentatively considered positive in this study [12]. The stained slides were scored by two of the authors, and in case of any discordance, the case was observed under a multi-headed light microscope, and consensus was subsequently obtained.

TABLE 1 | Antibodies used for immunostaining and immunoblotting.

Antibody	Host	Antigen retrieval	Dilution	Application	Source
Ki-67	Mouse	Autoclave	100	IHC	Dako (Denmark)
ER β	Mouse	Autoclave	1,000	IHC	Gene Tex (LA, United States)
ER β	Rabbit	—	2,000	WB	Millipore (Germany)
STS	Mouse	—	100	IHC	Kyowa medex (Japan)
EST	Mouse	Microwave (pH9)	100	IHC	Sigma-aldrich (MO, United States)
Aromatase	Mouse	—	500	IHC	Dr Evans DB (ref. Sasano H. <i>J Steroid Biochem Mol Biol.</i> 2005)

IHC, immunohistochemistry; WB, western blotting; ER, estrogen receptor; STS, steroid sulfatase; EST, estrogen sulfotransferase.

Cell Lines

The human bladder urothelial carcinoma cell line used in this study was the T24 cell line (American Type Cell Culture Collection (ATCC), Manassas, VA, United States). Cells were grown in McCoy's 5 A medium (Gibco) containing 10% fetal bovine serum (FBS; Nichirei, Tokyo, Japan) and 1% penicillin-streptomycin.

Immunoblotting ER β Protein Expression Level in T24 Cells

The protein contents of T24 cells were extracted using M-PER (Pierce Biotechnology, Rockford, IL, United States) with Halt protease Inhibitor Cocktail (Pierce Biotechnology, Rockford, IL,

United States) and protein concentration was determined using a Protein Assay Kit (Wako Pure Chemical Industries, Osaka, Japan). Proteins were resolved using SDS-PAGE (10% acrylamide gel) and transferred onto a PVDF membrane. After blocking with TBS-T (containing 0.05% Tween 20) and 5% non-fat dry skimmed milk for 1 h at room temperature (20°C), the membranes were incubated overnight at 4°C with the primary antibodies. The membranes were then washed and incubated for 1 h with horseradish peroxidase-conjugated goat anti-mouse/rabbit IgGs (GE Healthcare, Buckinghamshire, United Kingdom) at room temperature (20°C). Immunoreactivity was subsequently visualized through chemiluminescence (ECL Prime western blotting detection reagents: GE Healthcare).

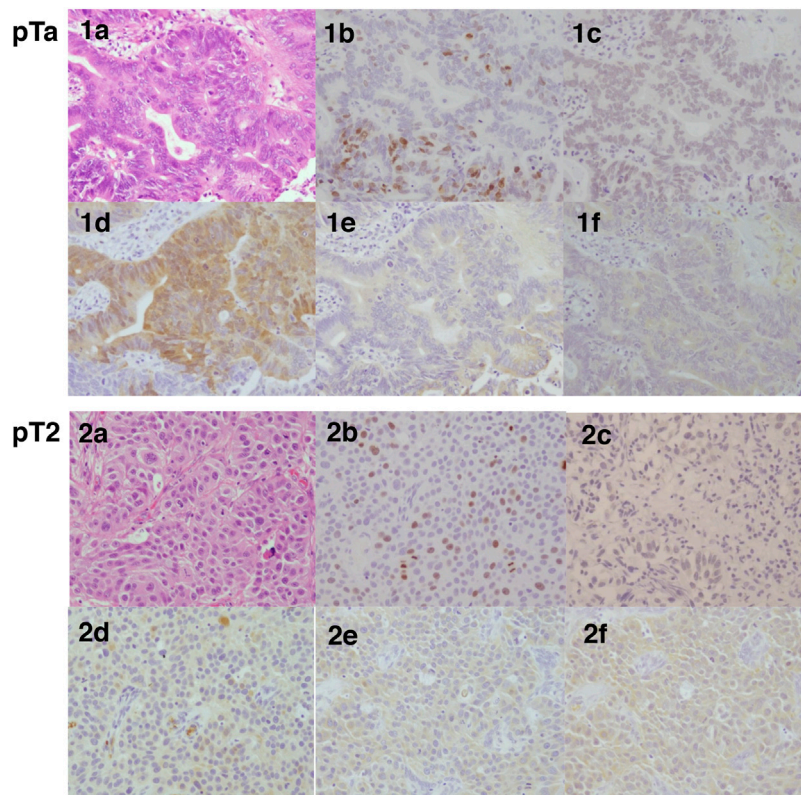
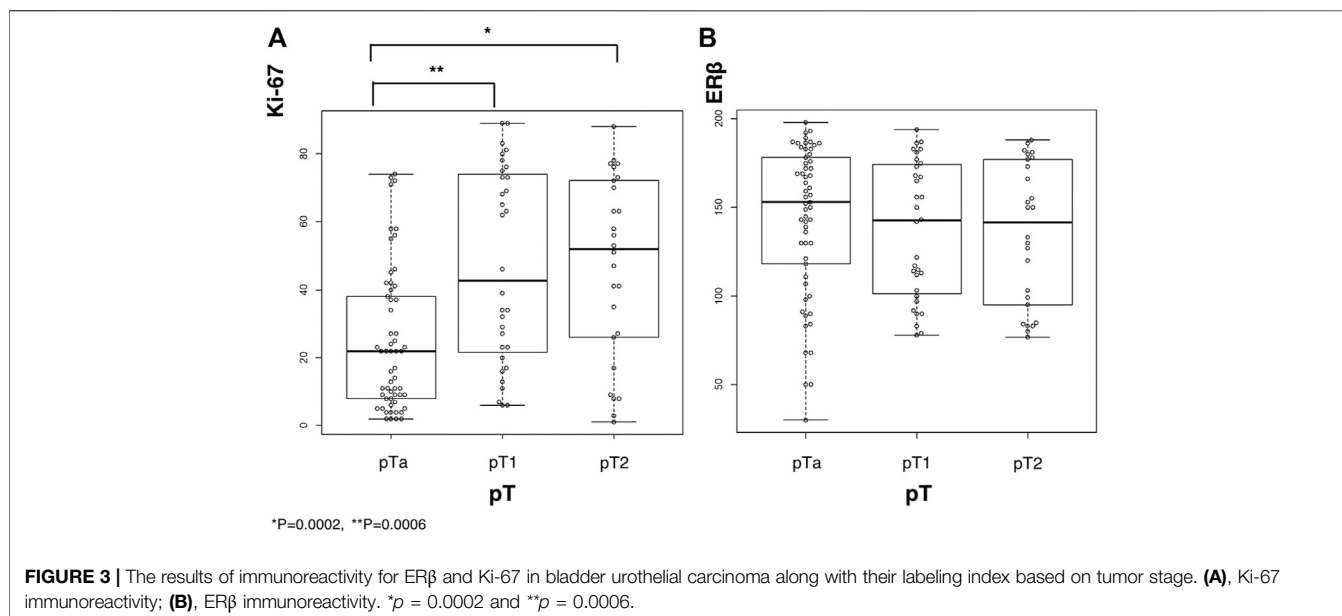


FIGURE 2 | Representative hematoxylin-eosin and immunohistochemistry illustrations of pTa and pT2 histological sections in bladder urothelial carcinoma. Hematoxylin-eosin stained tissue sections (a), Immunohistochemistry for Ki-67 (b), ER β (c), EST (d), STS (e), and aromatase (f) in bladder urothelial carcinoma. 1a-1f, pTa; 2a-2f, pT2.



Cell Proliferation Assay

In the cell proliferation assay, T24 cells were treated with E2 or ER β agonist DPN in a 96-well plate. For the steroid treatments, we incubated the cells in phenol red-free McCoy's 5 A medium (HyClone) supplemented with dextran-coated charcoal-stripped FBS (fetal bovine serum) and 1% penicillin-streptomycin for 48 h. Cell proliferation was evaluated using the WST-8 colorimetric assay (Cell Counting Kit-8; Dojindo, Kumamoto, Japan). The status of cell viability was also evaluated as a ratio (%) compared with that of controls.

Statistical Analysis

Statistical analyses were performed using R version 3.2.2 (The R Foundation for Statistical Computing Platform: x86_64-w64-mingw32/x64 (64-bit)). The correlation between various factors was evaluated using the Fisher's precise test. $p < 0.05$ was considered statistically significant. Student's t -test was used for the analysis of Ki-67 labeling index.

RESULTS

Immunolocalization of Ki-67, ER β , STS, EST, and Aromatase

Immunoreactivity of Ki-67 and ER β was predominantly detected in the nuclei of carcinoma cells (Figure 2), the average labeling index across the whole cohort and the tumor stage were summarized in Figure 3. The Ki-67 labeling index was significantly higher in pT2 than that in pT1 tumor grades (* $p = 0.0002$ and ** $p = 0.0006$, respectively) (Figure 3A), but the status of ER β immunoreactivity was not significantly correlated with the tumor grades (Figure 3B).

STS, EST, and aromatase were predominantly detected in the cytoplasm of carcinoma cells (Figure 2). STS and aromatase significantly decreased with the increasing tumor stages (Table 2, $p = 0.0017$ and $p = 0.0430$, respectively). EST and aromatase were significantly correlated with tumor nuclear grade (Table 3).

The status of Ki-67, ER β , STS, EST, and aromatase was not significantly correlated with other clinicopathological parameters including age and sex of the cases examined.

Effects of E2 or DPN Treatment on ER β Protein Expression in T24 Cells

The expression levels of the ER β protein were not significantly influenced by E2 or DPN treatment (Figure 4A).

Effects of E2 or DPN Treatment on Cell Proliferation in T24 Cells

We examined the effects of cell proliferation in T24 cells treated with 10–100 nM E2 or DPN. After treatment with E2 or DPN at 10–100 nM for 48 h, the proliferation rates of the T24 cells were significantly reduced (Figures 4B,C).

TABLE 2 | Correlation between pT stage and immunoreactivities of STS, EST and aromatase.

		Positive	Negative	p -value
STS	pTa	43	14	0.0017*
	pT1	20	12	
	pT2	9	17	
EST	pTa	44	13	0.1900
	pT1	22	10	
	pT2	15	11	
Aromatase	pTa	15	42	0.0430*
	pT1	3	29	
	pT2	15	11	

* Indicates statistical significance.

Tumor depth is regulated by tumor-node-metastasis (TNM) classification based on the 8th edition of the TNM classification of malignant tumors (UICC, union for international cancer control). STS, steroid sulfatase; EST, estrogen sulfotransferase.

TABLE 3 | Correlation between nuclear grade and immunoreactivities of STS, EST and aromatase.

		Positive	Negative	p-value
STS	G1	2	3	0.1670
	G2	31	11	
	G3	38	30	
EST	G1	2	4	0.0490*
	G2	35	7	
	G3	38	42	
Aromatase	G1	0	5	0.0323*
	G2	51	39	
	G3	17	15	

* Indicates statistical significance.

Nuclear grades are determined by histopathological grading of tumor-node-metastasis (TNM) classification based on the 8th edition of the TNM classification of malignant tumors (UICC, union for international cancer Control). STS, steroid sulfatase; EST, estrogen sulfotransferase.

DISCUSSION

The possible correlation between urothelial bladder carcinomas and sex steroids has been long proposed, but the details are not known. The status of ER expression has been reported to be correlated with the progression or prognosis of urinary bladder carcinomas [19, 23–25], but others have not been able to replicate the findings and an inverse correlation has even been reported [26–29]. However, selective estrogen receptor modulators (SERMs) such as tamoxifen and raloxifen have been consistently reported to inhibit the proliferation and invasion of urinary bladder urothelial carcinoma [19, 20, 30–32]. SERMs are known to harbor high binding affinity for ERs, to function as ER agonists in some specific tissues such as bone, liver, and cardiovascular system, and also act as ER antagonists in the breasts and uterus [7].

Therefore, in this study, we first correlated the loss of STS and aromatase immunoreactivity in urinary bladder urothelial

carcinomas with the increased tumor progression. In addition, the cell proliferation rates of T24 cells were significantly reduced following treatment with estradiol (E2) or diarylpropionitrile (DPN). In general, STS and aromatase have both been reported to be related to poor survival in many different carcinomas [10, 14, 15]. However, the results of our present study did demonstrate that STS and aromatase were both inversely related to the progression of urinary bladder urothelial carcinoma. These results, therefore, suggest that more active estrogen could be produced *in situ* in urothelial carcinoma, and could subsequently regulate the progression of the carcinoma. In addition, EST and aromatase were also significantly correlated with the nuclear grade of carcinoma, indicating that high-grade carcinoma could be associated with the local production/metabolism of estrogens. Previous study reported that ER β expression and the non-cadherin switch were both accompanied by better recurrence-free survival of patients with urinary bladder urothelial carcinoma [28]. The mechanistic correlation between urinary bladder urothelial carcinoma and ERs is controversial; however the results of our present study are consistent with these findings.

A sex-specific difference (three times more common in men than in women) in the incidence of urinary bladder urothelial carcinoma is also known [1]. In addition, urinary bladder urothelial carcinoma accounts for 3% of all cancer deaths in men and 1.5% in women [2]. Between 1973 and 1999, there was a 33% decline in bladder cancer mortality; however, its reduction has only been detected in male patients [2]. This is because female patients tended to have more advanced disease at the time of diagnosis than men, resulting in higher mortality in women. For instance, 28% of male patients were diagnosed with stage III or IV disease, whereas 43% of the females were diagnosed with those stages [33]. The delay in diagnosis, cultural, biological, and anatomical reasons have been proposed as the reasons of sex discrepancy [2], but the results of our present study suggested that the different status of intratumoral estrogen metabolism could also account for this sex difference. The status of estrogen receptors

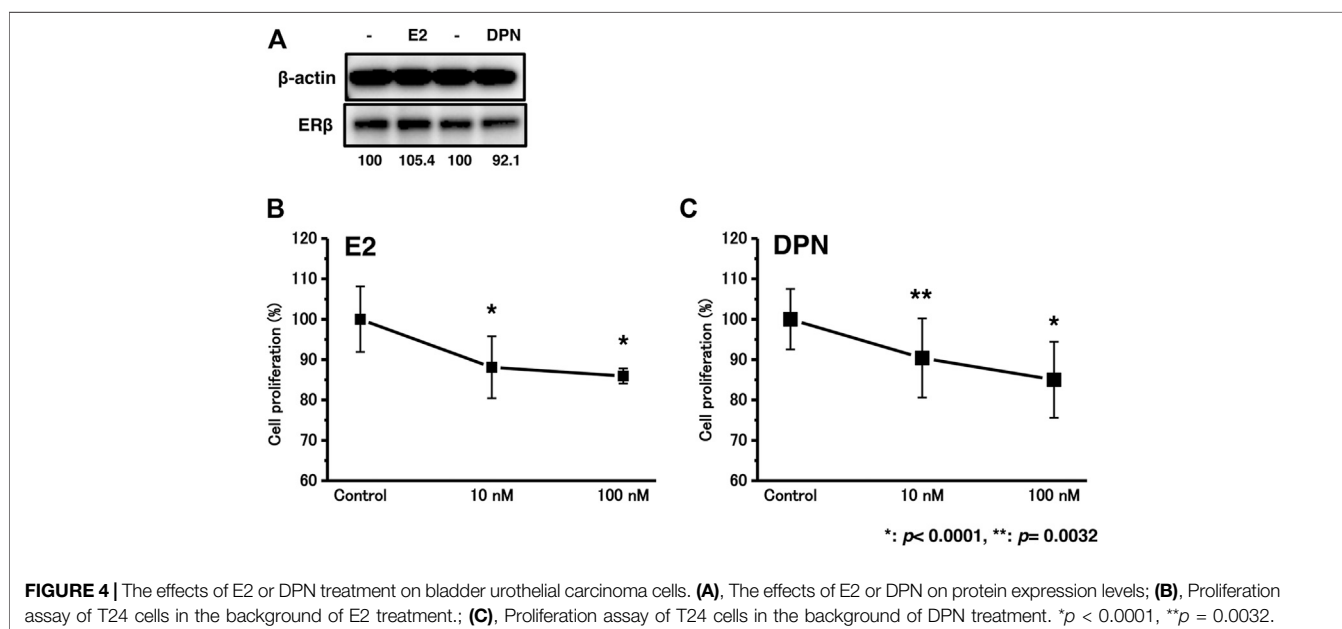


FIGURE 4 | The effects of E2 or DPN treatment on bladder urothelial carcinoma cells. (A), The effects of E2 or DPN on protein expression levels; (B), Proliferation assay of T24 cells in the background of E2 treatment.; (C), Proliferation assay of T24 cells in the background of DPN treatment. * $p < 0.0001$, ** $p = 0.0032$.

was by no means correlated with any clinicopathological factors; however, STS and aromatase were inversely correlated with the progression of the disease. These results suggested that decreased levels of biologically active estrogens could result in increased tumor cell proliferation, progression, and adverse clinical outcome of urinary bladder urothelial carcinoma patients. Biologically active estrogens, which can bind the ERs, could ameliorate bladder urothelial carcinoma progression, and this is considered at least one of the reasons why SERMs could suppress the proliferation and invasion of urinary bladder urothelial carcinoma via ER-dependent induction [19, 20, 30–32]. The results of our present study could also account for the reasons why the expression of ERs alone was by no means correlated with the clinical behavior of urinary bladder urothelial carcinoma. However, to the best of our knowledge, the correlation among steroid receptors, sex, and age has not been reported yet. One of the possible reasons for this is that there are very few pre-menopausal female patients of urinary bladder urothelial carcinoma. Therefore, further investigations are required to clarify the sex differences of urinary bladder urothelial carcinoma.

CONCLUSION

The results of our present study indicated that active estrogens could possibly ameliorate the progression of bladder urothelial carcinoma and that SERMs could be useful for the treatment of bladder urothelial carcinoma. Further investigations are required to elucidate the function of sex steroids in bladder urothelial carcinomas.

DATA AVAILABILITY STATEMENT

The raw data supporting the conclusions of this article will be made available by the authors, without undue reservation.

REFERENCES

- Burger M, Catto JWF, Dalbagni G, Grossman HB, Herr H, Karakiewicz P, et al. Epidemiology and risk factors of urothelial bladder cancer. *Eur Urol* (2013). 63(2):234–41. doi:10.1016/j.eururo.2012.07.033
- Madeb R, Messing EM. Gender, racial and age differences in bladder cancer incidence and mortality. *Urol Oncol* (2004). 22(2):86–92. doi:10.1016/s1078-1439(03)00139-x
- Tuygun C, Kankaya D, Imamoglu A, Sertcelik A, Zengin K, Oktay M, et al. Sex-specific hormone receptors in urothelial carcinomas of the human urinary bladder: a comparative analysis of clinicopathological features and survival outcomes according to receptor expression. *Urol Oncol* (2011). 29(1):43–51. doi:10.1016/j.urolonc.2009.01.033
- Boorjian S, Ugras S, Mongan NP, Gudas LJ, You X, Tickoo SK, et al. Androgen receptor expression is inversely correlated with pathologic tumor stage in bladder cancer. *Urology* (2004). 64(2):383–8. doi:10.1016/j.urol.2004.03.025
- McGrath M, Michaud DS, De Vivo I. Hormonal and reproductive factors and the risk of bladder cancer in women. *Am J Epidemiol* (2005). 163(3):236–44. doi:10.1093/aje/kwj028
- Suzuki T, Miki Y, Nakamura Y, Ito K, Sasano H. Steroid sulfatase and estrogen sulfotransferase in human carcinomas. *Mol Cell Endocrinol* (2011). 340(2): 148–53. doi:10.1016/j.mce.2010.11.001
- Begam AJ, Jubie S, Nanjan MJ. Estrogen receptor agonists/antagonists in breast cancer therapy: a critical review. *Bioorg Chem* (2017). 71:257–74. doi:10.1016/j.bioorg.2017.02.011
- Ghosh D. Human sulfatases: a structural perspective to catalysis. *Cell Mol Life Sci* (2007). 64(15):2013–22. doi:10.1007/s00018-007-7175-y
- Evans T, Rowlands M, Law M, Coombes R. Intratumoral oestrone sulphatase activity as a prognostic marker in human breast carcinoma. *Br J Cancer* (1994). 69:555–61. doi:10.1038/bjc.1994.101
- Utsunomiya H, Ito K, Suzuki T, Kitamura T, Kaneko C, Nakata T, et al. Steroid sulfatase and estrogen sulfotransferase in human endometrial carcinoma. *Clin Cancer Res* (2004). 10(17):5850–6. doi:10.1158/1078-0432.ccr-04-0040
- Okuda T, Saito H, Sekizawa A, Shimizu Y, Akamatsu T, Kushima M, et al. Steroid sulfatase expression in ovarian clear cell adenocarcinoma: immunohistochemical study. *Gynecol Oncol* (2001). 82(3):427–34. doi:10.1006/gyno.2001.6322
- Nakamura Y, Suzuki T, Fukuda T, Ito A, Endo M, Moriya T, et al. Steroid sulfatase and estrogen sulfotransferase in human prostate cancer. *Prostate* (2006). 66(9):1005–12. doi:10.1002/pros.20426
- Sato R, Suzuki T, Katayose Y, Miura K, Shiiba K, Tateno H, et al. Steroid sulfatase and estrogen sulfotransferase in colon carcinoma: regulators of intratumoral estrogen concentrations and potent prognostic factors. *Cancer Res* (2009). 69(3):914–22. doi:10.1158/0008-5472.can-08-0906

ETHICS STATEMENT

The studies involving human participants were reviewed and approved by Tohoku University School of Medicine (2013–1–37). The patients/participants provided their written informed consent to participate in this study.

AUTHOR CONTRIBUTIONS

YN and NS planned the experiments; SY and AI provided the materials; KI, NS and YN performed the experiments; NS performed the analytic calculations and wrote the article. YN and HS conceived the original idea and supervised the project. All authors discussed the results and contributed to the final manuscript.

FUNDING

This work was supported by JSPS KAKENHI Grant Number 26460412.

CONFLICT OF INTEREST

The authors declare that the research was conducted in the absence of any commercial or financial relationships that could be construed as a potential conflict of interest.

ACKNOWLEDGMENTS

We thank the members of the Department of Pathology, Tohoku University Graduate School of Medicine for their support.

14. Utsumi T, Yoshimura N, Maruta M, Takeuchi S, Ando J, Maeda K, et al. Significance of steroid sulfatase expression in human breast cancer. *Breast Cancer* (1999). 6:298–300. doi:10.1007/bf02966443
15. Chura JC, Blomquist CH, Ryu HS, Argenta PA Estrone sulfatase activity in patients with advanced ovarian cancer. *Gynecol Oncol* (2009). 112(1):205–9. doi:10.1016/j.ygyno.2008.08.037
16. Miki Y, Nakata T, Suzuki T, Darnel AD, Moriya T, Kaneko C, et al. Systemic distribution of steroid sulfatase and estrogen sulfotransferase in human adult and fetal tissues. *J Clin Endocrinol Metab* (2002). 87(12):5760–8. doi:10.1210/jc.2002-020670
17. Suzuki T, Miki Y, Nakata T, Shiotsu Y, Akinaga S, Inoue K, et al. Steroid sulfatase and estrogen sulfotransferase in normal human tissue and breast carcinoma. *J Steroid Biochem Mol Biol* (2003). 86(3–5):449–54. doi:10.1016/s0960-0760(03)00356-x
18. Noronha RFX, Rao BR Sex hormone receptors in localized and advanced transitional cell carcinoma of urinary tract in humans. *Urology* (1986). 28(5):401–3. doi:10.1016/0090-4295(86)90073-7
19. Shen SS, Smith CL, Hsieh J-T, Yu J, Kim IY, Jian W, et al. Expression of estrogen receptors- α and - β in bladder cancer cell lines and human bladder tumor tissue. *Cancer* (2006). 106(12):2610–6. doi:10.1002/cncr.21945
20. Sonpavde G, Okuno N, Weiss H, Yu J, Shen SS, Younes M, et al. Efficacy of selective estrogen receptor modulators in nude mice bearing human transitional cell carcinoma. *Urology* (2007). 69(6):1221–6. doi:10.1016/j.urology.2007.02.041
21. Miki Y, Suzuki T, Tazawa C, Yamaguchi Y, Kitada K, Honma S, et al. Aromatase localization in human breast cancer tissues: possible interactions between intratumoral stromal and parenchymal cells. *Cancer Res* (2007). 67(8):3945–54. doi:10.1158/0008-5472.can-06-3105
22. Aasmundstad TA, Haugen OA, Johannesen E, Hoe AL, Kvinnsland S Oestrogen receptor analysis: correlation between enzyme immunoassay and immunohistochemical methods. *J Clin Pathol* (1992). 45:125–9. doi:10.1136/jcp.45.2.125
23. Kaufmann O, Baume H, Dietel M Detection of oestrogen receptors in non-invasive and invasive transitional cell carcinomas of the urinary bladder using both conventional immunohistochemistry and the tyramide staining amplification (TSA) technique. *J Pathol* (1998). 186(2):165–8. doi:10.1002/(sici)1096-9896(1998100)186:2<165::aid-path155>3.0.co;2-y
24. Miyamoto H, Yao JL, Chaux A, Zheng Y, Hsu I, Izumi K, et al. Expression of androgen and oestrogen receptors and its prognostic significance in urothelial neoplasm of the urinary bladder. *BJU Int* (2012). 109(11):1716–26. doi:10.1111/j.1464-410x.2011.10706.x
25. Nam JK, Park SW, Lee SD, Chung MK Prognostic value of sex-hormone receptor expression in non-muscle-invasive bladder cancer. *Yonsei Med J* (2014). 55(5):1214. doi:10.3349/ymj.2014.55.5.1214
26. Larocca LM, Giustacchini M, Maggiano N, Ranelletti FO, Piantelli M, Alcini E, et al. Growth-inhibitory effect of quercetin and presence of type II estrogen binding sites in primary human transitional cell carcinomas. *J Urol* (1994). 152(3):1029–33. doi:10.1016/s0022-5347(17)32649-6
27. Kontos S, Kominea A, Melachrinou M, Balampani E, Sotiropoulou-Bonikou G Inverse expression of estrogen receptor- β and nuclear factor- κ B in urinary bladder carcinogenesis. *Int J Urol* (2010). 17(9):801–9. doi:10.1111/j.1442-2042.2010.02603.x
28. Han B, Cui D, Jing Y, Hong Y, Xia S Estrogen receptor β (ER β) is a novel prognostic marker of recurrence survival in non-muscle-invasive bladder cancer potentially by inhibiting cadherin switch. *World J Urol* (2012). 30(11):861–7. doi:10.1007/s00345-011-0819-4
29. Mashhadi R, Pourmand G, Kosari F, Mehrsai A, Salem S, Pourmand MR, et al. Role of steroid hormone receptors in formation and progression of bladder carcinoma: a case-control study. *Urol J* (2014). 11(06):1968–73. doi:10.22037/uj.v11i06.2617
30. Hsieh T-S Tsong-chang tsai, ann-lii cheng, chang-yao hsieh, ih-jen su, and ming-kuen Lai. Tamoxifen enhances the chemosensitivity of bladder carcinoma cells. *J Urol* (1995). 154(2):601–5. doi:10.1097/00005392-199508000-00078
31. Kim HT, Kim BC, Kim IY, Mamura M, Seong DH, Jang J-J, et al. Raloxifene, a mixed estrogen agonist/antagonist, induces apoptosis through cleavage of BAD in TSU-PR1 human cancer cells. *J Biol Chem* (2002). 277(36):32510–5. doi:10.1074/jbc.m202852200
32. Hoffman KL, Lerner SP, Smith CL Raloxifene inhibits growth of RT4 urothelial carcinoma cells via estrogen receptor-dependent induction of apoptosis and inhibition of proliferation. *Horm Cancer* (2012). 4(1):24–35. doi:10.1007/s12672-012-0123-9
33. Kiemenev LALM, Coebergh JWW, Koper NP, Van Der Heijden LH, Pauwels RPE, Schapers RFM, et al. Bladder cancer incidence and survival in the south-eastern part of The Netherlands, 1975–1989. *Eur J Cancer* (1994). 30(8):1134–7. doi:10.1016/0959-8049(94)90472-3

Copyright © 2021 Sato, Ise, Hata, Yamashita, Ito, Sasano and Nakamura. This is an open-access article distributed under the terms of the Creative Commons Attribution License (CC BY). The use, distribution or reproduction in other forums is permitted, provided the original author(s) and the copyright owner(s) are credited and that the original publication in this journal is cited, in accordance with accepted academic practice. No use, distribution or reproduction is permitted which does not comply with these terms.